

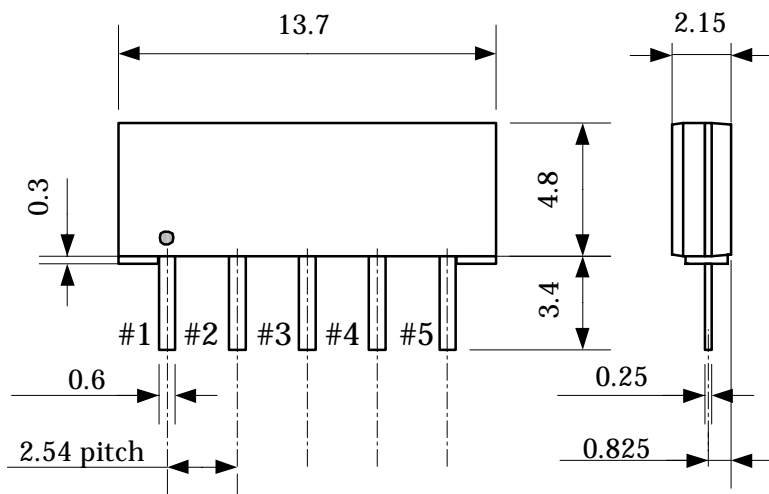
Customer Name	<b>Standard specification</b>	FUJITSU MEDIA DEVICES LIMITED	
Application	IF Filter for digital cable TV		
System	America		
Picture Carrier Frequency	47.25 MHz	DATE	Oct. 26 2005
FMD Part Number	FAR-F4SE-47M250-H0AC	Version	1.0 <b>Preliminary</b>

**Table 1 Proposal Specification (Ta=25°C)**

Items	Conditions	Specification			Unit	Remarks
		Min.	Typ.	Max.		
Insertion Loss	47.25 MHz	12.7	14.2	15.7	dB	
Pass bandwidth	3dB	–	6.2	–	MHz	
	30dB	–	8.0	–	MHz	
Relative level	37.00 ~ 41.65 MHz	–	–47	–40	dB	
	41.65 ~ 43.00 MHz	–	–44	–36	dB	
	44.15 MHz	–3.8	–2.8	–1.8	dB	
	47.25 MHz	–	0	–	dB	Reference
	50.35 MHz	–4.0	–3.0	–2.0	dB	
	51.40 ~ 54.00 MHz	–	–37	–32	dB	
Amplitude ripple (p-p)	54.00 ~ 57.00 MHz	–	- 48	- 40	dB	
	44.85 ~ 49.65 MHz	–	0.4	–	dB	
Group delay ripple (p-p)	44.15 ~ 50.35 MHz	–	32	–	ns	
Input Impedance	47.25 MHz	–	1.6//12.0	–	kΩ//pF	
Output Impedance	47.25 MHz	–	1.4//4.4	–	kΩ//pF	
Temperature coefficient		–	-72	–	ppm/°C	

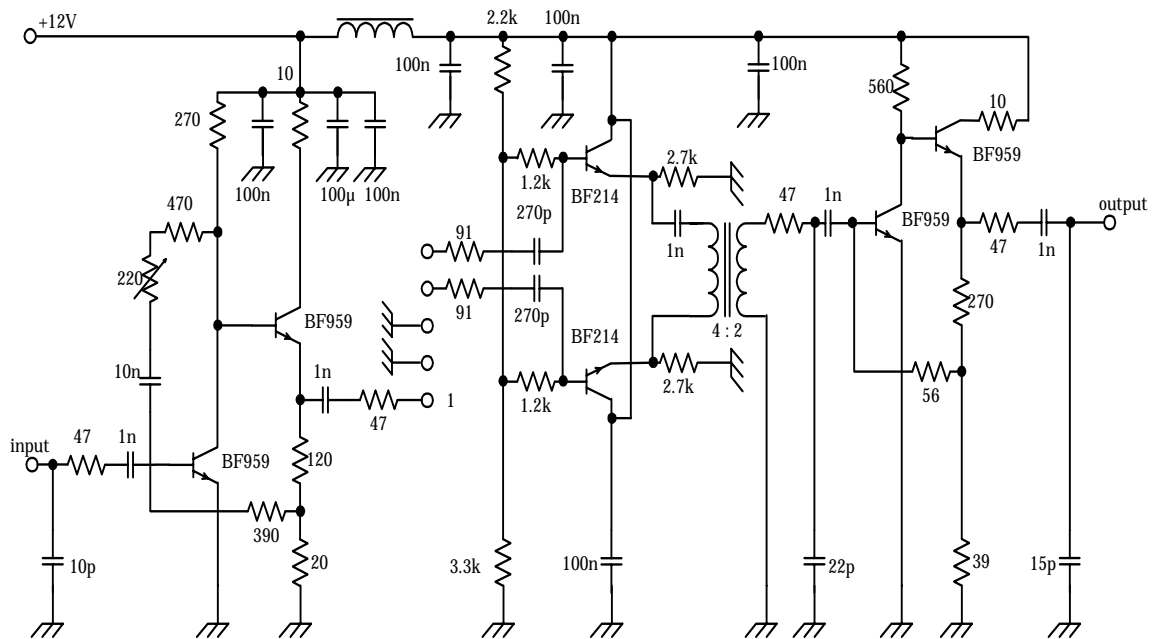
Customer Name	<b>Standard specification</b>	FUJITSU MEDIA DEVICES LIMITED	
Application	IF Filter for digital cable TV		
System	America		
Picture Carrier Frequency	47.25 MHz	DATE	Oct. 26 2005
FMD Part Number	FAR-F4SE-47M250-H0AC	Version	1.0 <b>Preliminary</b>

## 1. Pin assignment of plastics Package



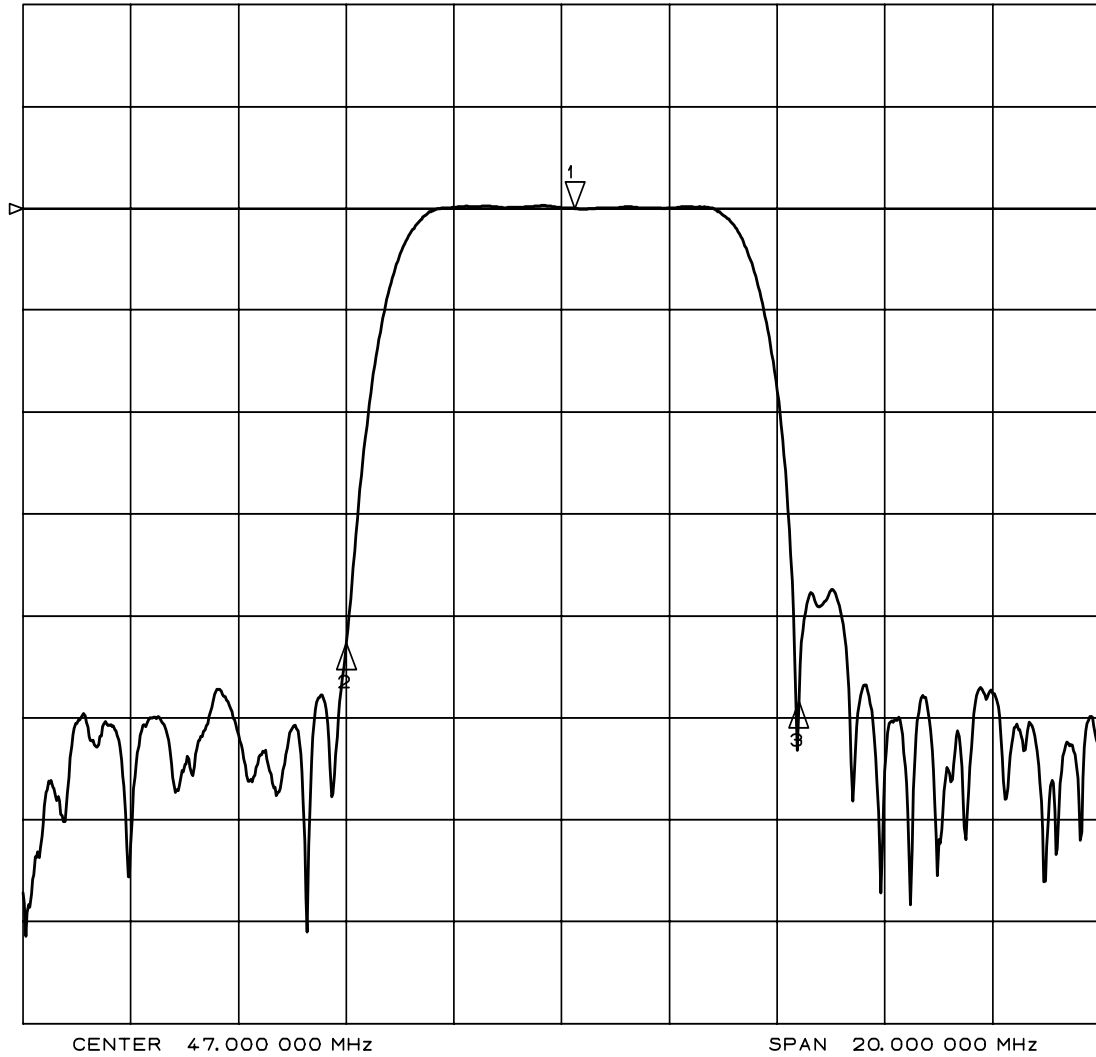
Pin No.	Pin name	Description
1	IN	input pin
2	IN	input pin ( Ground )
3	GND	Ground pin
4	OUT	output pin
5	OUT	output pin

## 2. Measurement circuit



Customer Name	<b>Standard specification</b>	FUJITSU MEDIA DEVICES LIMITED	
Application	IF Filter for digital cable TV		
System	America		
Picture Carrier Frequency	47.25 MHz	DATE	Oct. 26 2005
FMD Part Number	FAR-F4SE-47M250-H0AC	Version	1.0 <b>Preliminary</b>

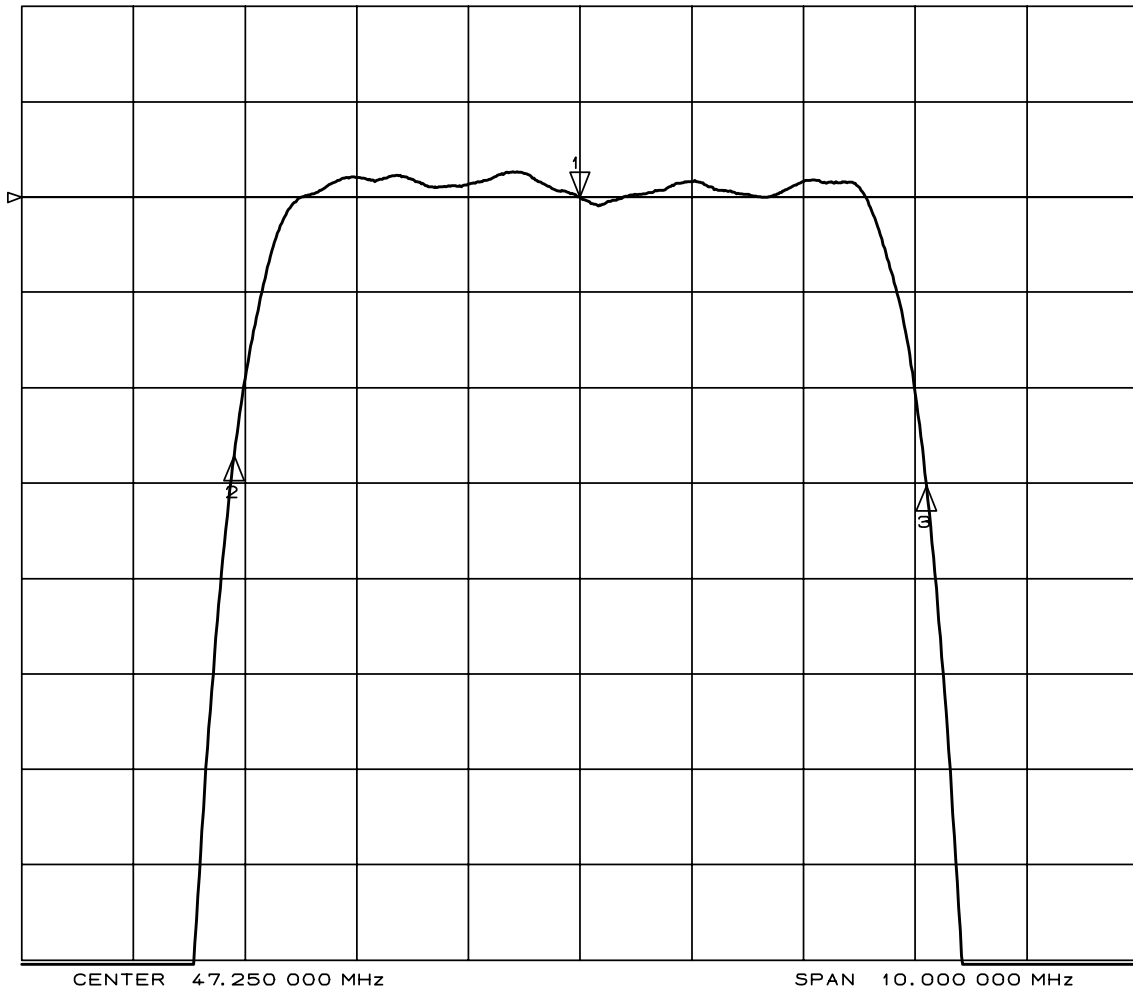
Amplitude Response (10dB/div)



Marker 1 = 47.25 MHz  
 Marker 2 = 43.00 MHz  
 Marker 3 = 51.40 MHz

Customer Name	<b>Standard specification</b>	FUJITSU MEDIA DEVICES LIMITED	
Application	IF Filter for digital cable TV		
System	America		
Picture Carrier Frequency	47.25 MHz	DATE	Oct. 26 2005
FMD Part Number	FAR-F4SE-47M250-H0AC	Version	1.0 <b>Preliminary</b>

Amplitude Response (1dB/div)

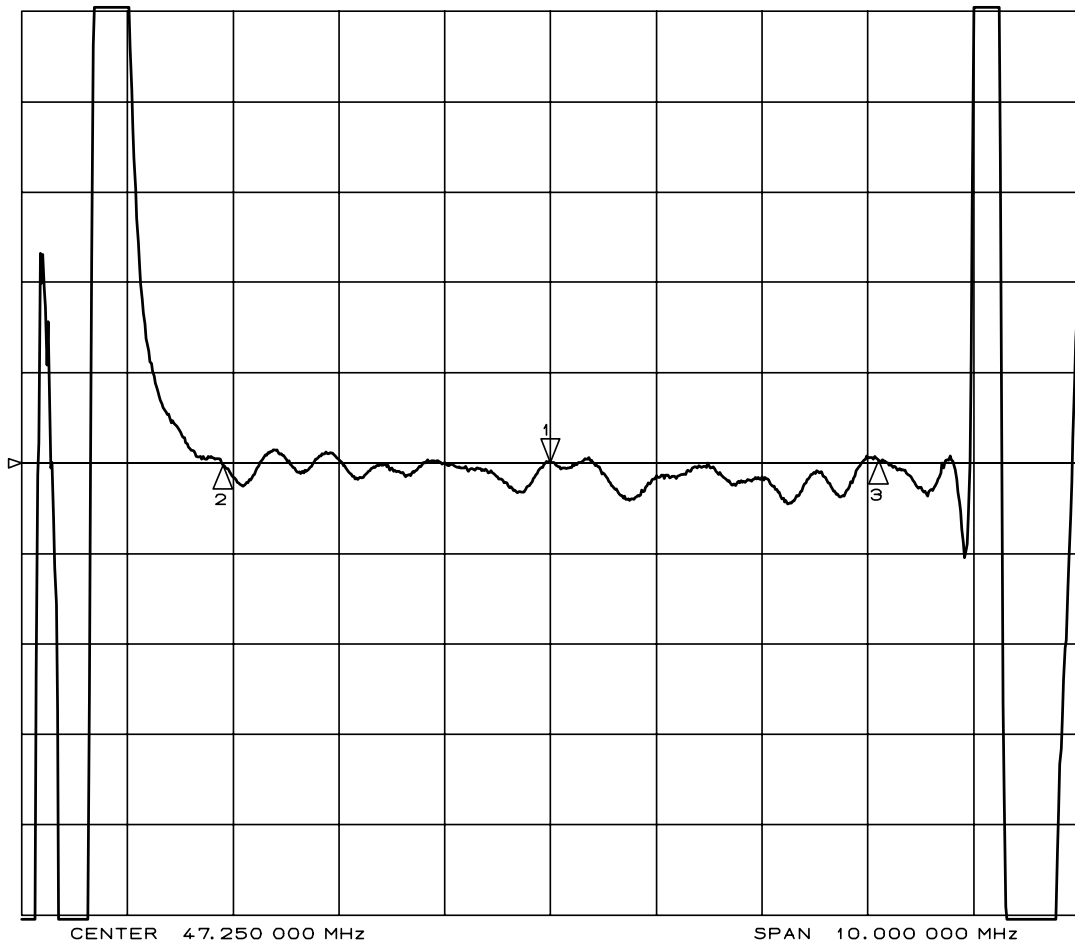


Marker 1 = 47.25 MHz  
 Marker 2 = 44.15 MHz  
 Marker 3 = 50.35 MHz

Customer Name	<b>Standard specification</b>	FUJITSU MEDIA DEVICES LIMITED	
Application	IF Filter for digital cable TV		
System	America		
Picture Carrier Frequency	47.25 MHz	DATE	Oct. 26 2005
FMD Part Number	FAR-F4SE-47M250-H0AC	Version	1.0 <b>Preliminary</b>

Group Delay (50ns/div)

Delay Aper.=200kHz



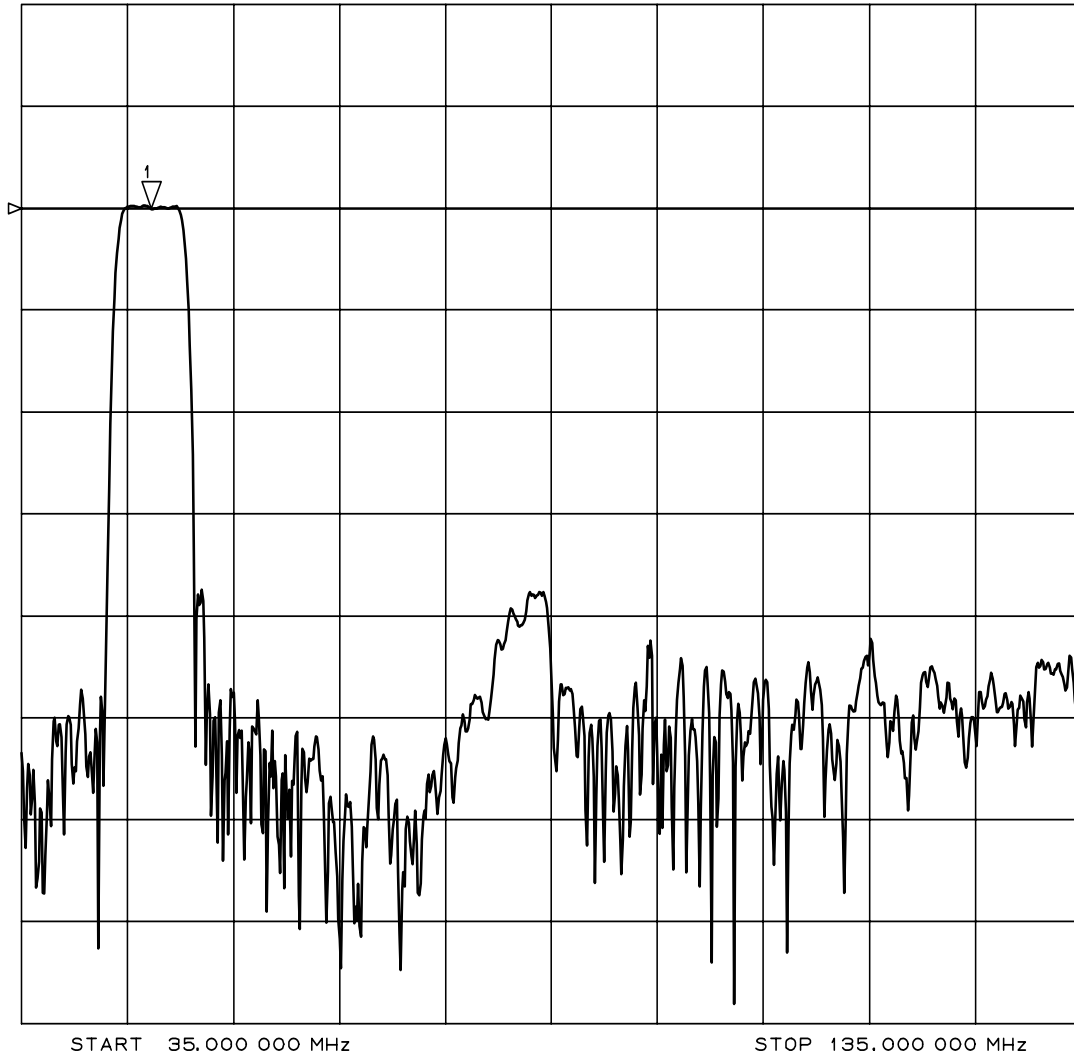
Marker 1 = 47.25 MHz

Marker 2 = 44.15 MHz

Marker 3 = 50.35 MHz

Customer Name	<b>Standard specification</b>	FUJITSU MEDIA DEVICES LIMITED	
Application	IF Filter for digital cable TV		
System	America		
Picture Carrier Frequency	47.25 MHz	DATE	Oct. 26 2005
FMD Part Number	FAR-F4SE-47M250-H0AC	Version	1.0 <b>Preliminary</b>

Amplitude Response (10dB/div)  
( 35.0MHz ----- 135.0MHz )



Marker 1 = 47.25 MHz

Customer Name	<b>Standard specification</b>	FUJITSU MEDIA DEVICES LIMITED	
Application	IF Filter for digital cable TV		
System	America		
Picture Carrier Frequency	47.25 MHz	DATE	Oct. 26 2005
FMD Part Number	FAR-F4SE-47M250-H0AC	Version	1.0 <b>Preliminary</b>

Time domain Response (10dB/div)

