

Customer Name	<b>Standard specification</b>	FUJITSU MEDIA DEVICES LIMITED	
Application	IF Filter for TV(SIF+SIF)		
System	L'/L		
Picture Carrier Frequency	33.9/38.9 MHz	DATE	Jun. 27 2003
FMD Part Number	F817JPL	Version 1.3	

**Table 1-1 Electrical Specification (Ta=25°C)**

Channel 1 (L')		INPUT=Pin No.1			Unit	Remarks
Items	Conditions	Specification				
		Min.	Typ.	Max.		
Insertion Loss	fp+6.5 (40.40 MHz)	16.2	17.7	19.2	dB	
Relative level	fp-1.5 (32.40 MHz)	–	-42	-38	dB	
	fp (33.90 MHz)	–	-50	-38	dB	
	fp+4.5 (38.40 MHz)	–	-31	-25	dB	
	fp+5.85 (39.75 MHz)	- 0.9	0.6	2.1	dB	
	fp+6.5 (40.40 MHz)	–	0	–	dB	Reference
	fp+8 (41.90 MHz)	–	-31	-18	dB	
	25.00 ~ 33.90 MHz	–	-39	-30	dB	
	41.90 ~ 45.00 MHz	–	-31	-18	dB	
Input Capacitance	Cin (1.0 MHz)	–	10.0	–	pF	
Output Capacitance	Cout (1.0 MHz)	–	4.6	–	pF	
Temperature coefficient		–	-80	–	ppm/°C	

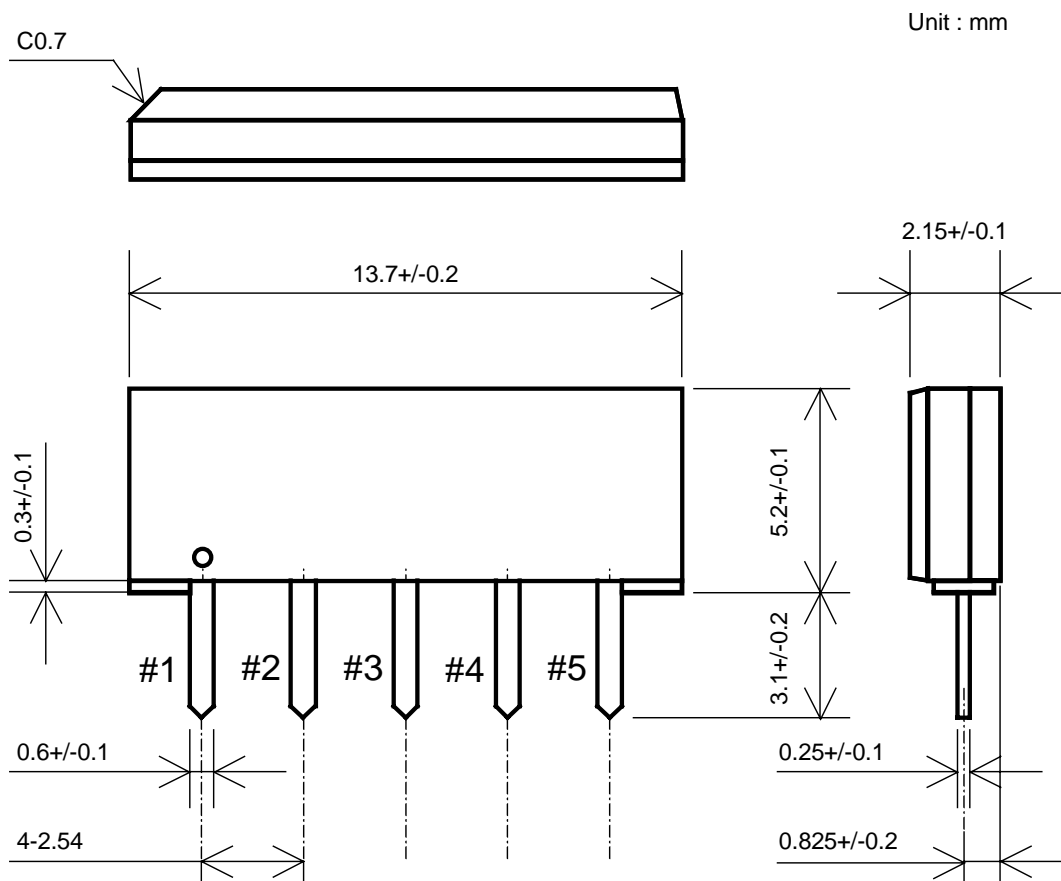
Customer Name	<b>Standard specification</b>	FUJITSU MEDIA DEVICES LIMITED	
Application	IF Filter for TV(SIF+SIF)		
System	L'/L		
Picture Carrier Frequency	33.9/38.9 MHz	DATE	Jun. 27 2003
FMD Part Number	F817JPL	Version 1.3	

**Table 1-2 Electrical Specification (Ta=25°C)**

Channel 2 (L)		INPUT=Pin No.2			Unit	Remarks
Items	Conditions	Specification				
		Min.	Typ.	Max.		
Insertion Loss	fp-6.5 (32.40 MHz)	12.2	13.7	15.2	dB	
Relative level	fp-8 (30.90 MHz)	–	-40	-35	dB	
	fp-6.5 (32.40 MHz)	–	0	–	dB	Reference
	fp-5.85 (33.05 MHz)	- 2.0	- 0.5	1.0	dB	
	fp-4.5 (34.40 MHz)	–	-40	-28	dB	
	fp (38.90 MHz)	–	-48	-35	dB	
	fp+1.5 (40.40 MHz)	–	-42	-35	dB	
	25.00 ~ 30.90 MHz	–	-40	-30	dB	
	38.90 ~ 45.00 MHz	–	-40	-30	dB	
Output Capacitance	Cout (1.0 MHz)	–	4.6	–	pF	
Temperature coefficient		–	-80	–	ppm/°C	

Customer Name	<b>Standard specification</b>	FUJITSU MEDIA DEVICES LIMITED	
Application	IF Filter for TV(SIF+SIF)		
System	L'/L		
Picture Carrier Frequency	33.9/38.9 MHz	DATE	Jun. 27 2003
FMD Part Number	F817JPL	Version 1.3	

● **Dimensions**



**Fig.1**

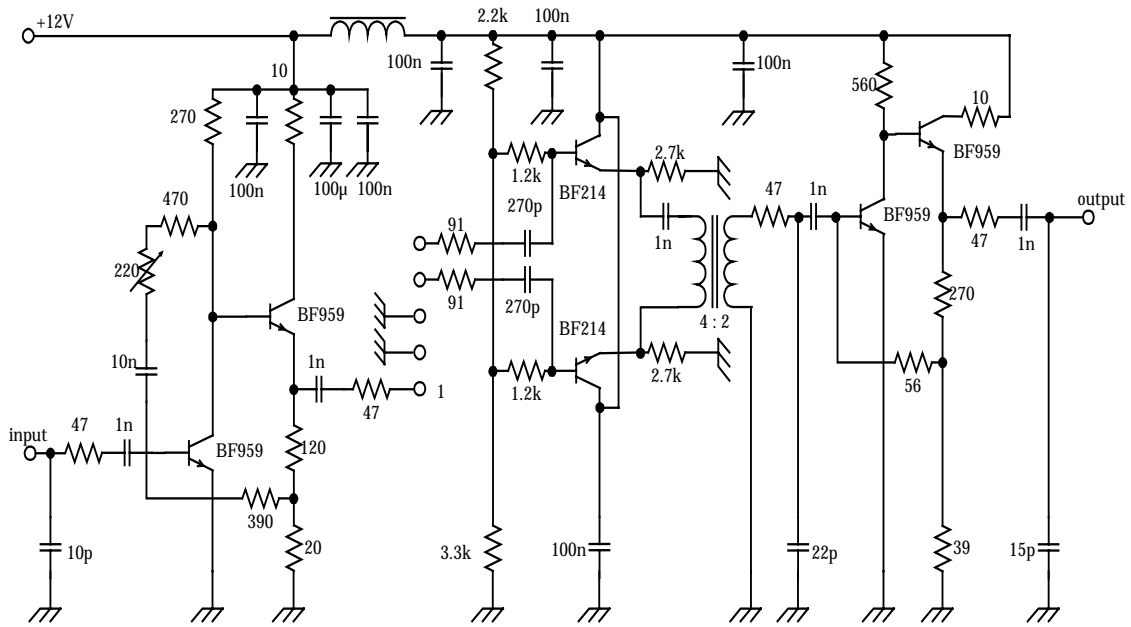
● **Pin Configuration**

**Table 2**

Pin No.	Symbol	Function
#1	IN(L')	Input(L')
#2	IN(L)	Input(L)
#3	GND	Ground
#4	OUT	Output
#5	OUT	Output

Customer Name	<b>Standard specification</b>	FUJITSU MEDIA DEVICES LIMITED	
Application	IF Filter for TV(SIF+SIF)		
System	L'/L		
Picture Carrier Frequency	33.9/38.9 MHz	DATE	Jun. 27 2003
FMD Part Number	F817JPL	Version 1.3	

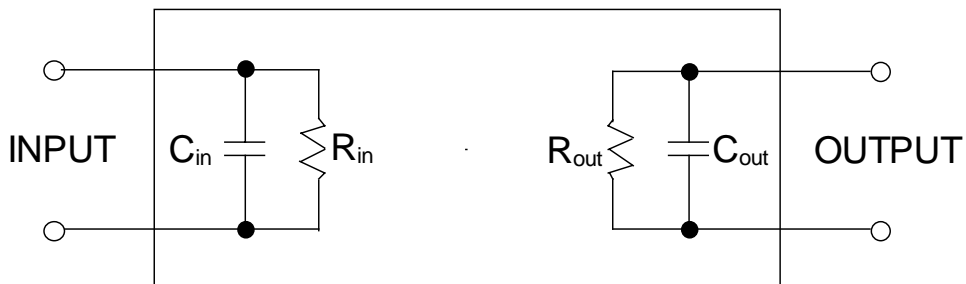
● **Evaluation Circuit**



Channel 1 (L') Pin No.1:Input Pin No.2:Ground  
 Channel 2 (L) Pin No.1:Ground Pin No.2:Input

**Fig.2 Evaluation circuit**

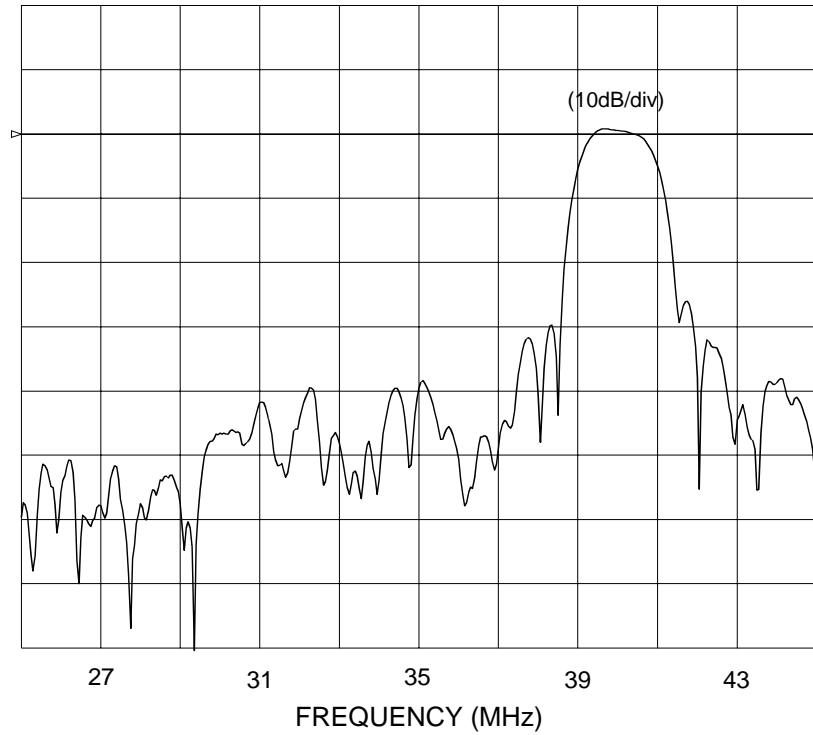
● **Equivalent Circuit**



**Fig.3 Equivalent circuit**

Customer Name	<b>Standard specification</b>	FUJITSU MEDIA DEVICES LIMITED	
Application	IF Filter for TV(SIF+SIF)		
System	L'/L		
Picture Carrier Frequency	33.9/38.9 MHz	DATE	Jun. 27 2003
FMD Part Number	F817JPL	Version 1.3	

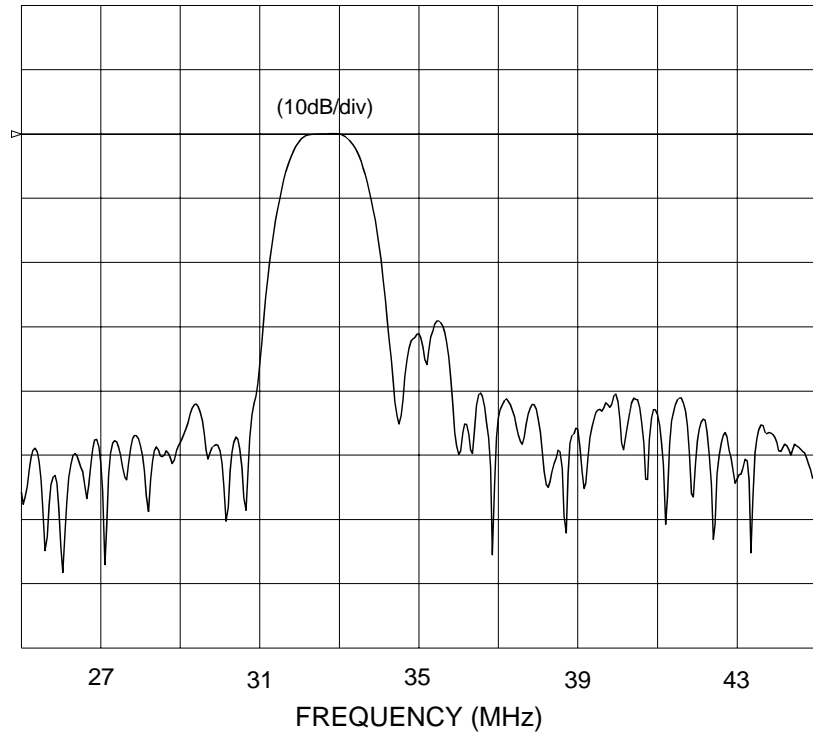
Channel 1 (L')



**Frequency Characteristics**

Customer Name	<b>Standard specification</b>	FUJITSU MEDIA DEVICES LIMITED	
Application	IF Filter for TV(SIF+SIF)		
System	L'/L		
Picture Carrier Frequency	33.9/38.9 MHz	DATE	Jun. 27 2003
FMD Part Number	F817JPL	Version 1.3	

Channel 2 (L)



**Frequency Characteristics**